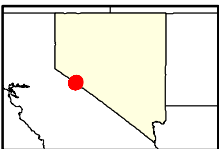
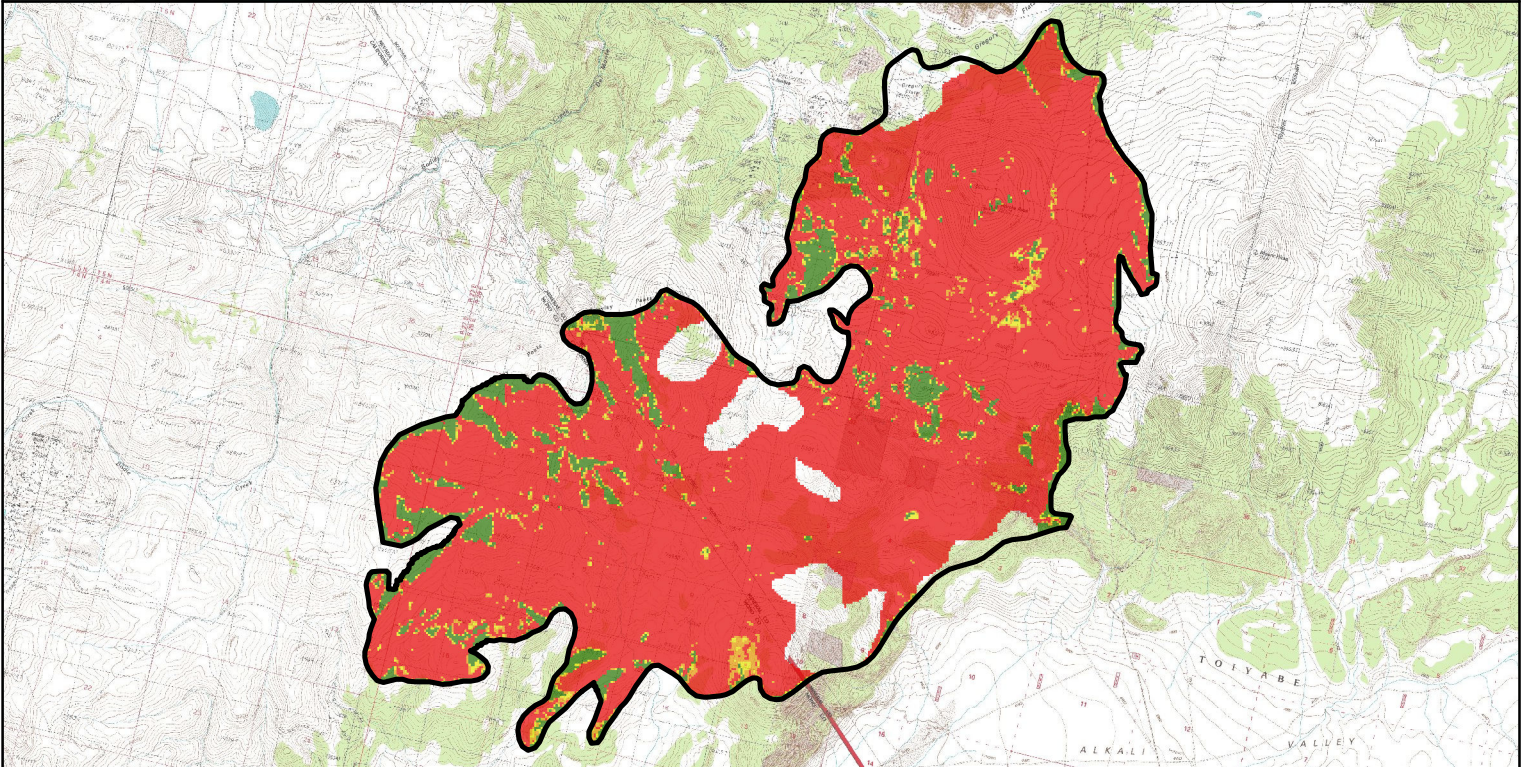
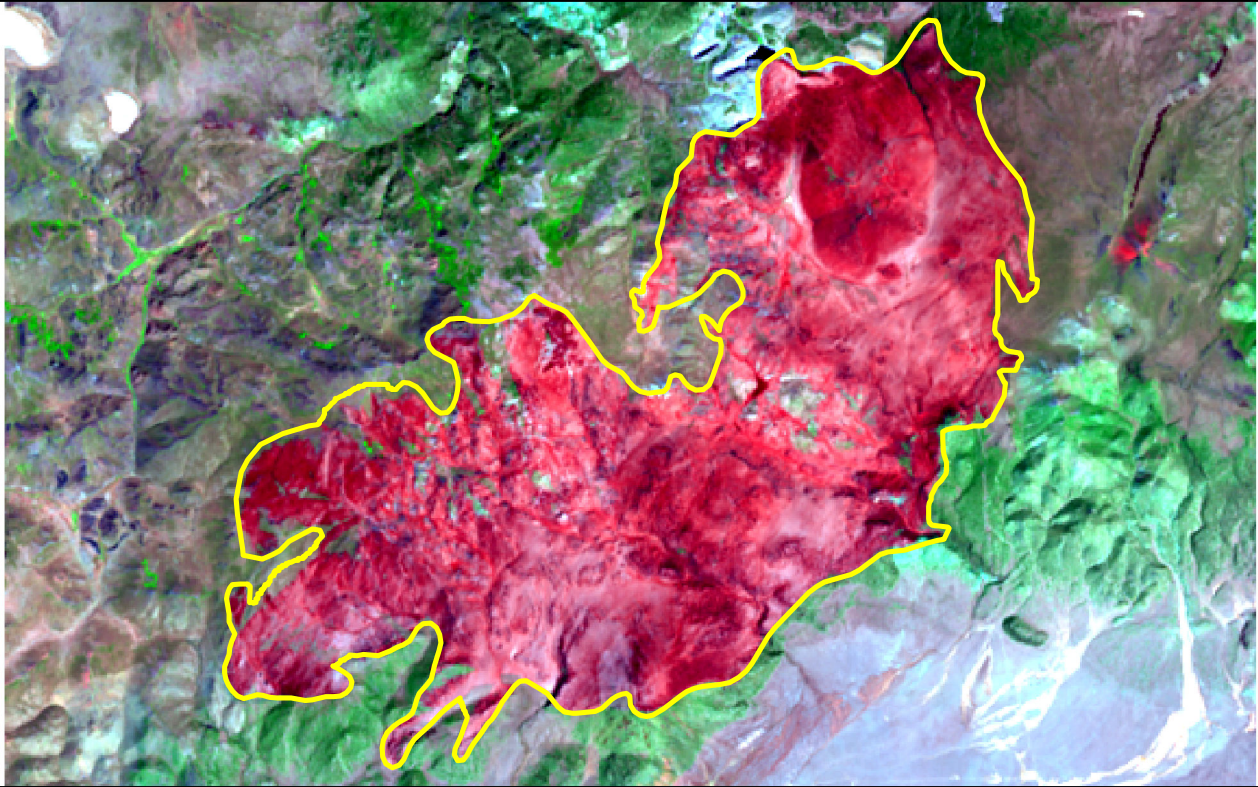


2013 NV: SPRING PEAK

NV3826311825020130818



0 2 4 Miles

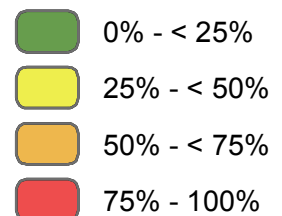


Rapid Assessment of Vegetation Condition
after Wildfire. Created by the USFS
Remote Sensing Applications Center (RSAC).

For more information contact
Tony Guay at:
801.975.3763
tguay@fs.fed.us

 Burn Scar Boundary

Basal Area Loss



Geospatial
Management
Office
United States Forest Service