

From: Mcavoy, Scott <smcavoy@ucsd.edu>

Sent: Tuesday, July 25, 2023 9:55 AM

To: Alessandra Spreafico Polito <alessandra.spreafico@polito.it>

Cc: Filiberto Chiabrando <filiberto.chiabrando@polito.it>

Subject: Re: Turin 1911 Media - CHEI

Hi Ale,

Good notes, I'll take them one by one below:

Q: It is taking the point clouds available on OH3D and has the Turin 1911 description included, right? I mean, if you change something in the potree on OH3D, is this one automatically updated?

A: Yes, the fountain layers stream from the OH3D visualization server (pointcloud.ucsd.edu), the others are on my local machine. I will want to move the whole project over to the pointcloud server when we can confirm that it's public. The only thing that would change is the model itself, all contexts (websites) with descriptions and code need to be updated manually.

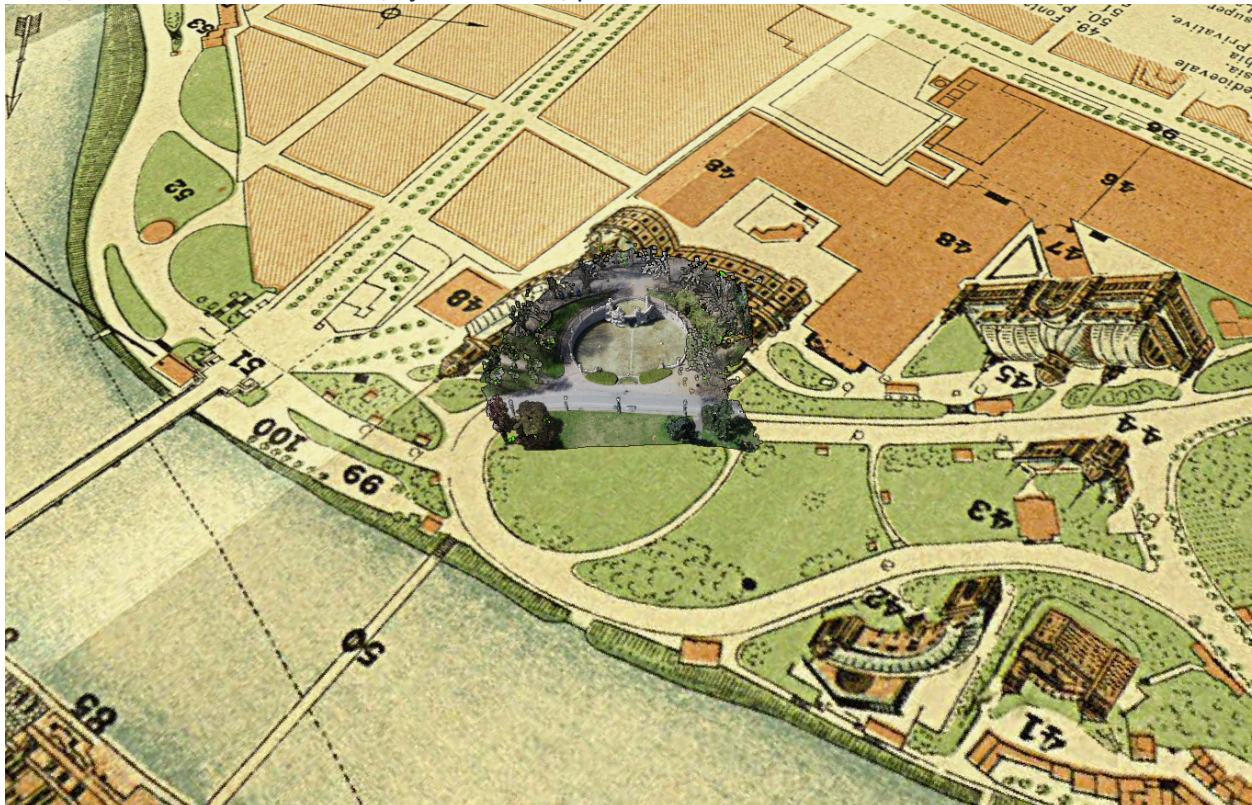
Q: 1. Could you please insert a link to the word '4 statuary groups' and link this [view](#)?

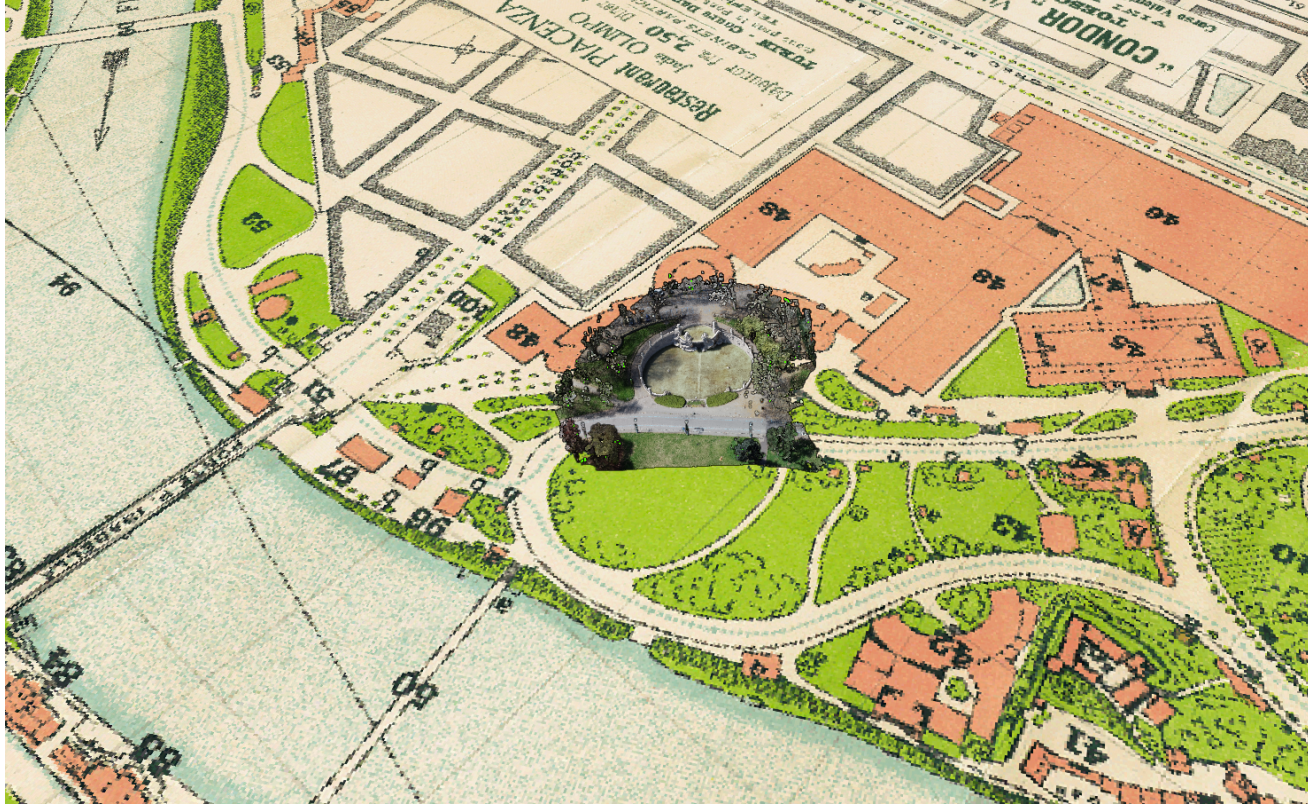
A: done, I added a heading for "features" here we would zoom around to the different places.

Q: id you try to upload the 1911 georeferenced map I sent to you? It is the one stored in in /GIS_data/raster/plan1911_bigger

You could insert it as '1911 by Gran Didier & C.', while for the other '1911 by Ajassa & Ferrato'.

A: no, I didn't catch that before, I just added it, picture below:





Q: 3. Is it possible to switch to another color the text color when that thing is active?

I mean, for instance, when you click on 'on' for the basemap, is it possible to have it light yellow?

So you know what is on/off.

We are using the UCSD color palette available [here](#), maybe the Yellow or Gold could fit.

A: Yes, this is a great note, but I'll need some help implementing it. I don't know if you've looked at the code for these pages, the CSS is a real mess. I will look into it, but doubt it'll be implemented for Thursday.

Q: 4. Is there a home button, so if you get lost you can return to the initial view?

A: at the very top of the right hand dialogue box is a "zoom to full" link. Is this the function you're looking for? I can rename it home or add a button.

Q:5. I see you can move the box with the description, is there a button to restore the initial position?

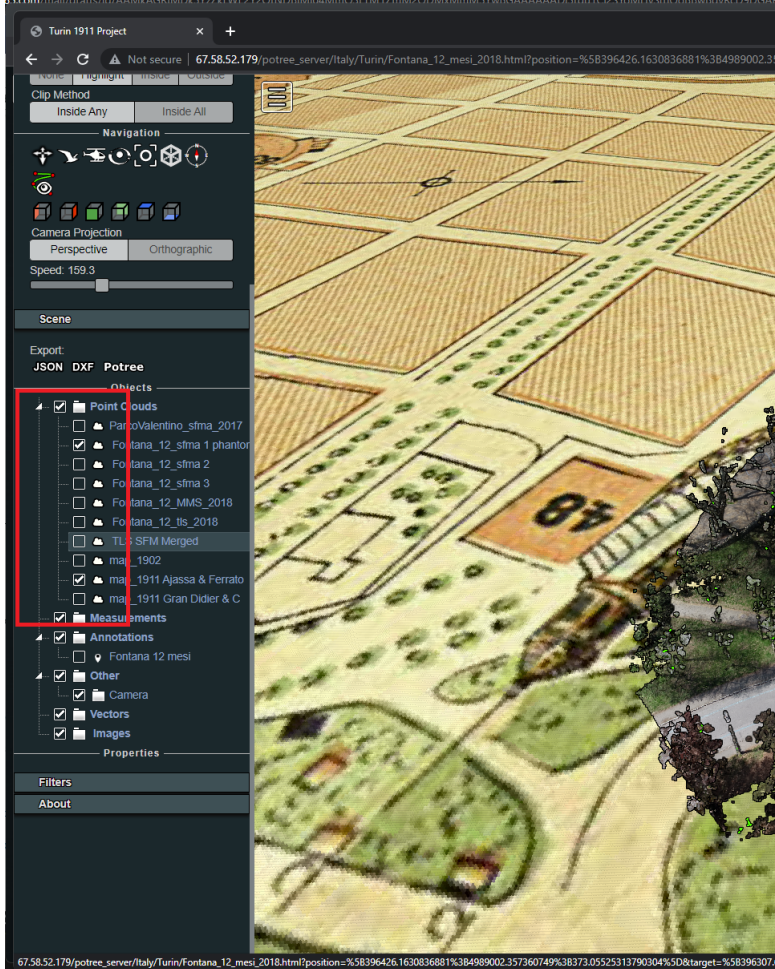
A: nope, not yet. it's a bit of a mess

Q:6. Is there a way to see the 1911 map with one of the pointcloud?

Maybe we should consider to insert only | on | off for each layer, so the user is free to select whatever it wants.

Also a turn all on | off could help. What do you suggest?

A: Yes, as shown in map images above. the right sidebar I've designed for shortcuts which help me tell a story, but the function toggles off groups. If you expand the left menu and go to the "scene" area you can individually toggle layers.



Unfortunately I lost my student programmer during an inopportune funding blip, but I hope to recruit another by the time you get to SD to help implement some more difficult features.

-Scott

From: Alessandra Spreafico Polito <alessandra.spreafico@polito.it>
Sent: Tuesday, July 25, 2023 12:41 AM
To: Mcavoy, Scott <smcavoy@ucsd.edu>
Cc: Filiberto Chiabrando <filiberto.chiabrando@polito.it>
Subject: Re: Turin 1911 Media - CHEI

Hi Scott!

http://67.58.52.179/potree_server/Italy/Turin/Fontana_12_mes1_2018.html

I love this one!

I've replaced the other one with this one on the Turin 1911 website [here](#).

It is taking the point clouds available on OH3D and has the Turin 1911 description included, right?

I mean, if you change something in the potree on OH3D, is this one automatically updated?

I have a few things to ask you to check/add.

1. Could you please insert a link to the word '4 statuary groups' and link this [view](#)?

2. Did you try to upload the 1911 georeferenced map I sent to you? It is the one stored in in /GIS_data/raster/plan1911_bigger

You could insert it as '1911 by Gran Didier & C.', while for the other '1911 by Ajassa & Ferrato'.

3. Is it possible to switch to another color the text color when that thing is active?

I mean, for instance, when you click on 'on' for the basemap, is it possible to have it light yellow?

So you know what is on/off.

We are using the UCSD color palette available [here](#), maybe the Yellow or Gold could fit.

4. Is there a home button, so if you get lost you can return to the initial view?

5. I see you can move the box with the description, is there a button to restore the initial position?

6. Is there a way to see the 1911 map with one of the pointcloud?

Maybe we should consider to insert only | on | off for each layer, so the user is free to select whatever it wants.

Also a turn all on | off could help. What do you suggest?

I still need to check what you asked me in our last meeting.

Now I'm working on what Cristina asked me for Thursday.

Sorry for the delay

Thank you!

Ale

On Mon, Jul 24, 2023 at 6:15 PM Mcavoy, Scott <smcavoy@ucsd.edu> wrote:

Hello Ale and Filiberto,

A short video (0:43), all datasets are now visible and mostly aligned in potree

<https://youtu.be/Ce1W5TMzSjQ>

Layers are:

DJI Phantom

DJI Mavic

DJI Spark

TLS

TLS + Terrestrial photogrammetry + Mavic + Spark

MMS

available at:

[Open Heritage 3D | Data](#)

Also updated on

http://67.58.52.179/potree_server/Italy/Turin/Turin_2017.html

http://67.58.52.179/potree_server/Italy/Turin/Fontana_12_mesi_2018.html

From: Mcavoy, Scott <smcavoy@ucsd.edu>

Sent: Saturday, July 22, 2023 4:13 PM

To: Alessandra Spreafico Polito <alessandra.spreafico@polito.it>

Cc: Filiberto Chiabrando <filiberto.chiabrando@polito.it>

Subject: Re: Turin 1911 Media - CHEI

Hey Ale,

Some updated links

I changed the Potree viewer for OpenHeritage3d

<https://pointcloud.ucsd.edu/OH3D/7ymp-ta22.html>

But I made a new one to embed in the Turin 1911 website. When you open the menu in the top left you'll see the